

Killingly High School Profile

2018-2019

226 Putnam Pike, Killingly, CT 06241

Phone: (860)779-6620

Fax: (860)779-3745

CEEB Code #070135

Superintendent

Steven Rioux

Assistant Superintendent

Paul Brenton

Principal

Elise Guari

Assistant Principal

Karen Lagace

Assistant Principal

Michael Lefevre

School Counselors

Phone: (860)779-6640

Website: www.killinglyschools.org/domain/78

Twitter: twitter.com/KHS_Counseling

Lindsey Colligan and Kevin Marcoux, Co-Lead Counselors

Nicole Magnano Jennifer Malerba Erika Ponciano Kirk Walker

Community

Killingly is located in the northeast corner of Connecticut, "The Quiet Corner" in Windham County. The town has a population of approximately 15,000, is located within forty miles of Providence, Hartford, and Worcester, and one and a half-hours from Boston. It is comprised of mostly middle to low-income families, most work in the professional, industrial, mercantile, and business environment in the surrounding areas.

Curriculum

Accreditation is from New England Association of Schools and Colleges and the Connecticut State Department of Education. Killingly High School is a four-year, comprehensive secondary school offering Advanced Placement, UConn ECE, honors, college preparatory, and general education courses. All offerings are leveled, with the degree of difficulty and amount of preparation identified for each course.

Level I: UConn ECE/Advanced Placement Level II: Honors Level III: College Preparatory Level IV: General Preparation

Special Academic Programs

- **The Agricultural Educational Regional Program** is located at KHS and students must apply for admission. Students who are accepted for enrollment by the high school and the Ag-Ed staff have a genuine interest in agricultural careers.
 - Through the **University of Connecticut Cooperative Program**, students may receive college credits in English while taught in conjunction with the AP course. The Family and Consumer Science Department also offers UConn credit in Human Development and Family Science 190. Ag-Ed students can receive credit for UConn's Biotechnology 3230 and Horticulture Ag-Ed students may receive credit for UConn's Horticulture 1110, 2520 and 3530.
 - **Independent Study Programs** are offered in subjects not included in the curriculum or in an area that is an extension or enrichment of the curriculum.
 - **Quinebaug Valley Community College** offers the opportunity for qualified students to earn college credits while in high school. Juniors or seniors with a "B" average may apply for acceptance into the "Partnership" program. Students taking a college prep course of study and qualifying electives may receive dual high school and college credits through QVCC's College Connections Program. All required courses for this program must be a "C" or better to receive college credit.
 - **Workplace Readiness Program** develops employability skills for high school students through a combination of classroom instruction and supervised on-the-job experiences. It includes opportunities to acquire necessary work habits, develop job skills, and establish an employment record. Please see the School to Career Page for more information.
 - **Alternate Education Center** is a small program consisting of two teachers and one counselor. The student enrollment is limited to twenty-five ranging from grades nine through twelve.
 - **EASTCONN Northeast Regional Program** is an alternative program designed for the student who is identified as a special education student and has had a documented history of difficulty working within the traditional educational structure.
-

Job Shadow Office

One full-time assistant coordinates services. The Office includes the vital links of the Youth Apprenticeship Program, Business & Computer Science Department, School Counseling Department, and the local business community.

<u>Grading</u>	<u>Performance Graduation Requirements (PGRs)</u>	<u>Graduation Requirements</u>
Passing Grade: 65 College Recommended Grade: 75 High Honors: all A's (<i>including A-</i>) First Honors: all A's and no more than two B's (<i>including B- and B+</i>) Second Honors: all A's, B's and one C (<i>including C- and C+</i>)	1. Education/Career Portfolio 2. Use of Technology 3. Persuasive Argument 4. Numeric Problem Solving 5. Oral Communication 6. Reading for Information 7. Response to Literature 8. Community Service	English 4 Credits Science (Including Biology) 3 Credits Social Studies 3 Credits (Including U.S. Hist. and American Citizenship) Mathematics 3 Credits Physical Education 1.5 Credits Health 0.5 Credits Career Ed/Tech Ed./Arts 2 Credits Electives (.5 in a computer course) <u>7 Credits</u> 24 Credits

Weighted Grading & Class Rank

A weighted grading system is used in determining class rank. Courses of greater difficulty receive bonuses in the weighting system. Four levels of weighting are used based on a 5.5 point scale. Incomplete grades are not computed, but will be adjusted when grade is computed. Class rank determines valedictorian and salutatorian and is also used by colleges in the acceptance process.

General (level IV) is based on a 4.0 scale

College Preparatory courses (level III) receive a .5 bonus.

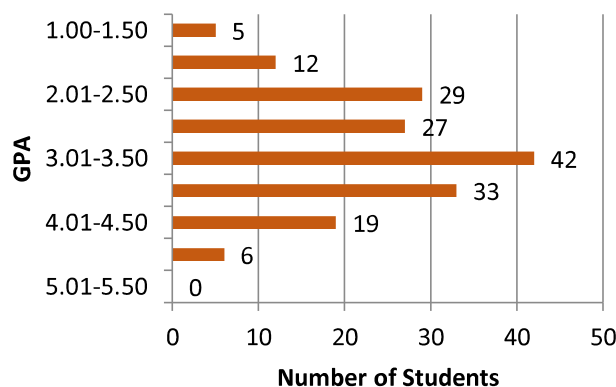
Honors (level II) courses receive a 1.0 bonus.

UConn ECE or Advanced Placement courses (level I) receive a 1.5 bonus.

Advanced Placement (AP)

Biology	Environmental Sci.	U.S. History
Calculus-AB	Calculus-BC	English Language
Latin	Music Theory	English Literature

Class of 2018 Weighted GPA Distribution



School Enrollment

Class of 2019- 194
 Class of 2020 - 177
 Class of 2021 - 219
 Class of 2022 - 211

Post-Secondary School Plans – Class of 2018

Class of 2018 Number in Class 177
 40% entered four-year colleges
 26% entered two-year colleges
 34% entered job training schools, military, work, or other

Faculty

69 - Regular Instructional Full-Time Faculty
 2- Part-Time Instructional Faculty
 19 - Instructional Assistants
 8 - Support Staff



Scholastic Assessment Test

SAT Summary State Test	Middle 50%	Mean
EBRW	440-580	510
MATH	420-525	470
TOTAL	870-1105	980
4yr college-bound students	Middle 50%	Mean
EBRW	490-610	558
MATH	460-550	509
TOTAL	970-1170	1067